

GREENPEACE

Implementing No Deforestation by RSPO

Grant Rosoman



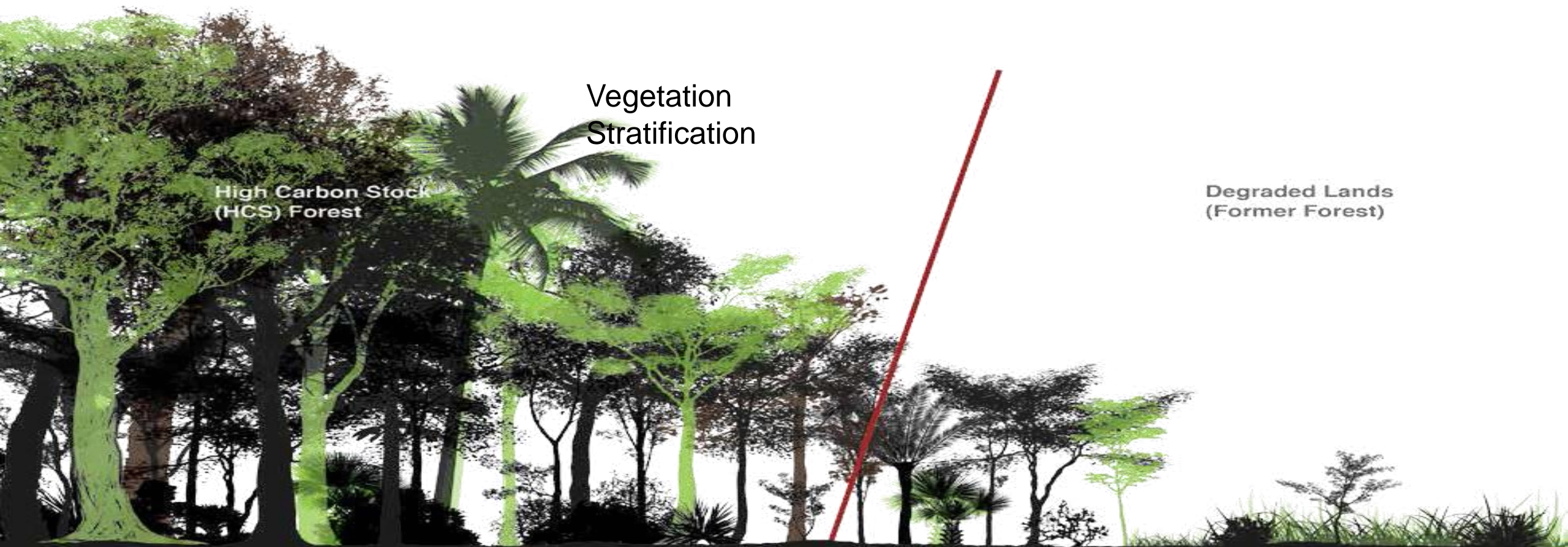
**A Shared Responsibility:
Converting Commitments into Action**

No Deforestation in Practice

– which areas are natural forest
and which are degraded land?

Established in 2014, the High Carbon Stock Approach is a global methodology to implement No-Deforestation commitments. It is a land-use planning tool that distinguishes forest (humid tropics) areas for protection from degraded lands with low carbon and biodiversity values that may be developed, including integration with HCVs, peatland protection, community rights and livelihoods

Putting No Deforestation into Practice - HCSA is a Nature-Based Solution to climate change and biodiversity crisis.



POTENTIAL HCS AREAS				MAY BE DEVELOPED	
High-Density Forest (HDF/HK3)	Medium Density Forest (MDF/HK2)	Low Density Forest (LDF/HK1)	Young Regenerating Forest (YRF)	Scrub (S))	Cleared/Open Land (OL)

31 DEC 2018 | STORY | CLIMATE CHANGE

Towards zero deforestation

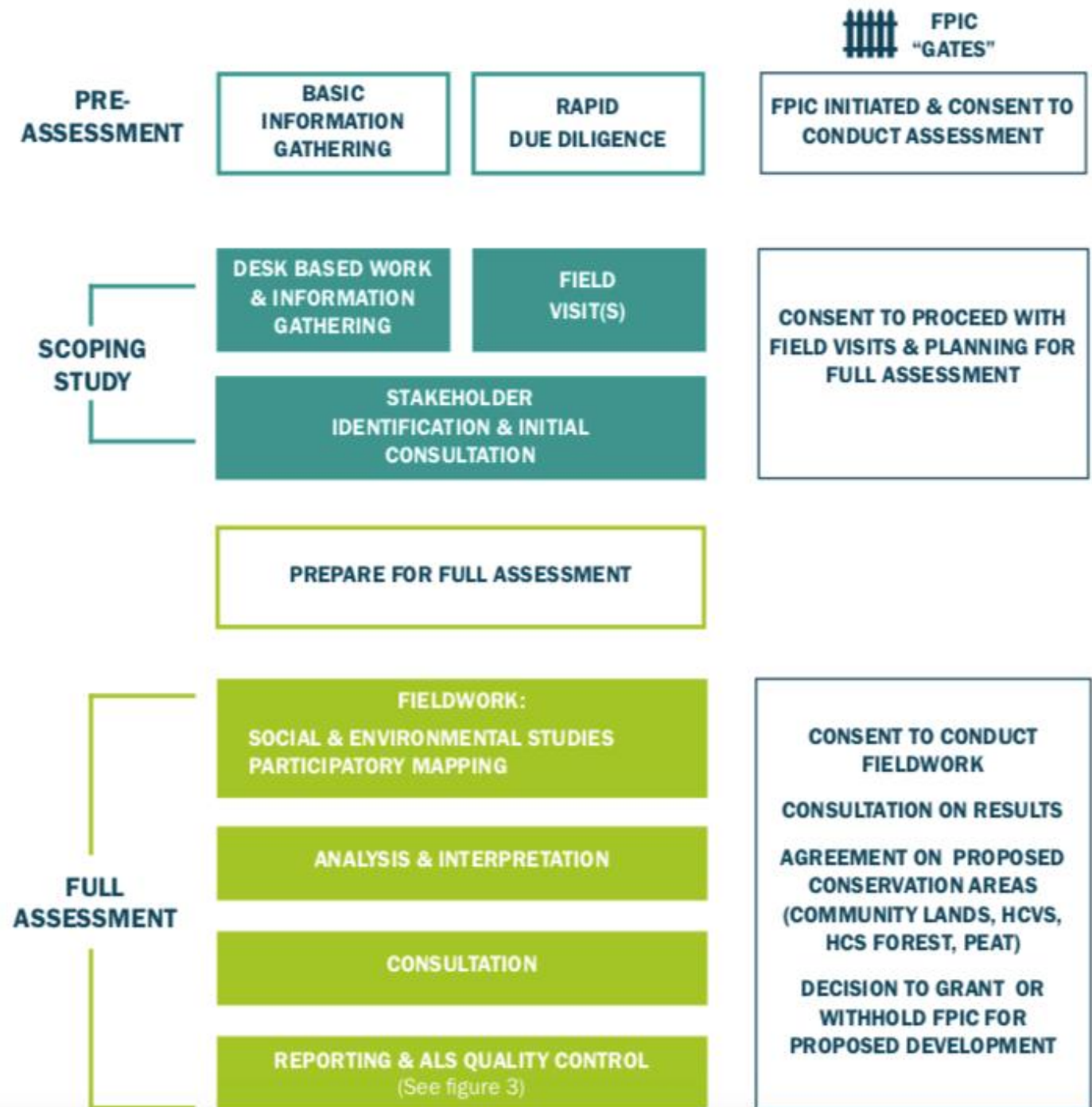


The High Carbon Stock Approach, a new global methodology that helps answer such questions and implement No Deforestation commitments. It's a land use planning tool focused on achieving No Deforestation. It integrates social considerations—local community customary rights, livelihoods and needs, high conservation values, peatlands, riparian zones and plantation operational aspects.

31 December 2018, UN Environment Program –

<https://www.unenvironment.org/news-and-stories/story/towards-zero-deforestation>

Integrated HCV- HCSA Assessments (from Nov 2017)

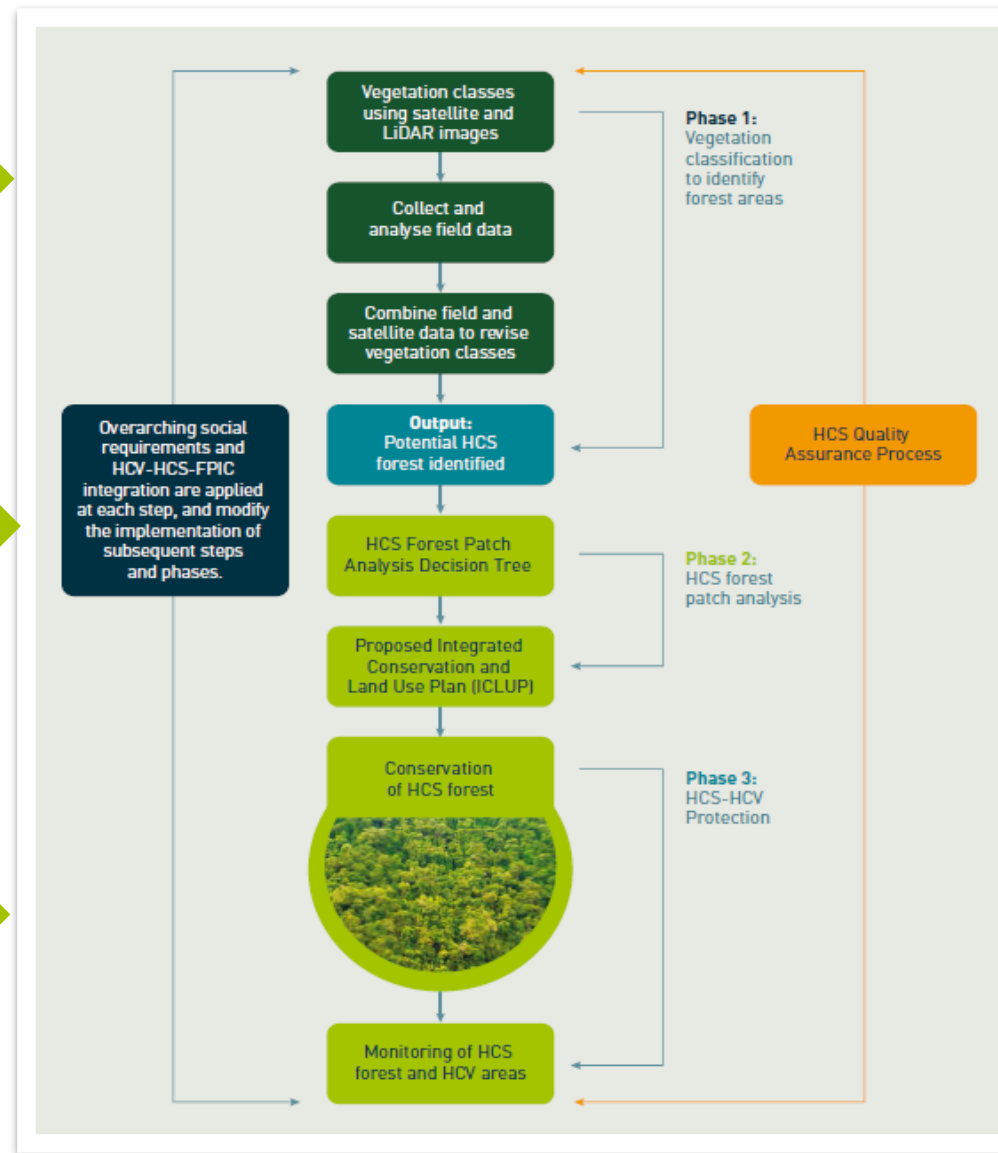


HCSA – pre-condition of conversion moratorium and post assessment Integrated Conservation and Land Use Plan (ICLUP) finalisation, management and monitoring

Phase 1: uses remote sensing and ground survey data to develop a map of potential HCS forest areas in a particular development area.

Phase 2: Classification and analysis of patches using HCS Decision Tree and to develop proposed Integrated Conservation and Land Use Plan (ICLUP).

Phase 3: Long term protection of HCS forest areas through: Management and Monitoring, Benefits and Incentives for Communities, Financing of Conservation and Community Incentives.



HCSA Toolkit Update

1. Social Requirements:

- 14 social requirements in process of being added to the toolkit, including on FPIC, participatory mapping, food security and livelihoods.
- Trial implementation

2 Smallholder Adaptation:

- Draft adapted HCSA/HCV Smallholder checklist and guidance developed and being trialed.
- Integrated with incentives and benefits package for conservation of HCS forest and HCV area.



HCSA Toolkit Update (2)

3. High Forest Cover Landscape ‘Legacy’ Cases:

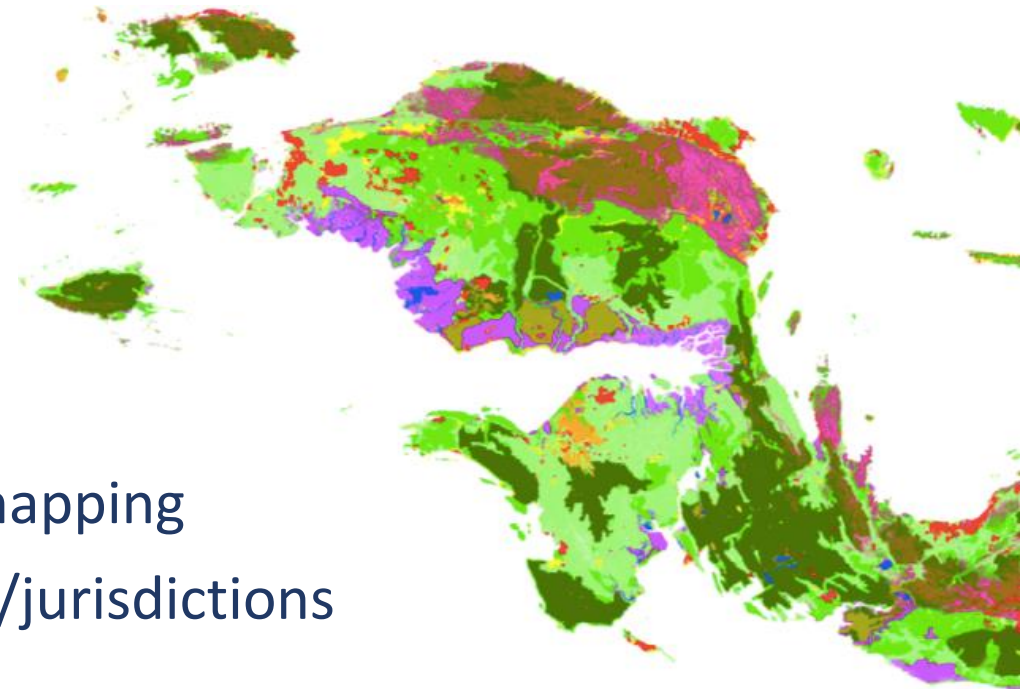
- Processing applications. Several accepted and notified soon.
- Working with companies committed to transparency and balancing development with actual conservation and community livelihood benefits.

4. Protection Working Group:

- Developing ICLUP guidance and requirements
- Guidance on HCS forest/HCV mgt and monitoring
- Forest conservation financing

5. Large-scale Indicative Mapping:

- Developing a procedure for large-scale indicative mapping
- Producing indicative HCS-HCV maps for landscapes/jurisdictions



RSPO No Deforestation Implementation Challenges

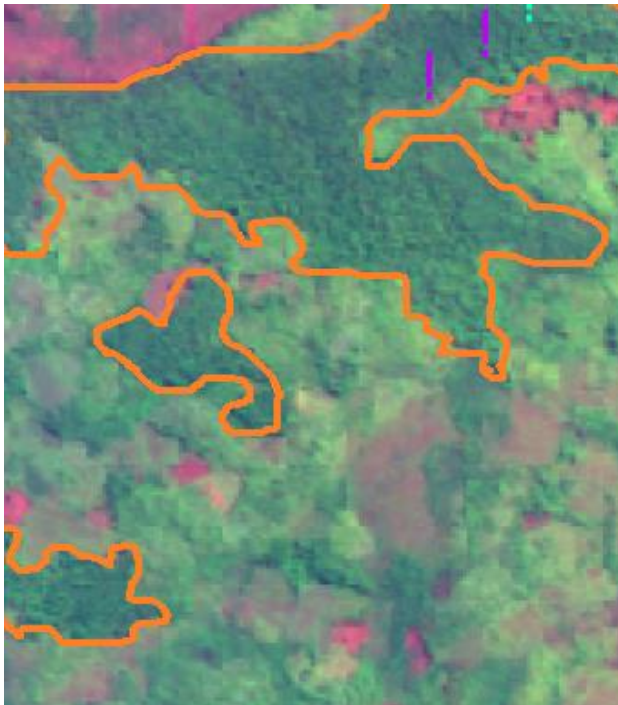
- Recent implementation of 'standalone' HCSA or integrated HCV-HCSA - 30+ assessments
- No Deforestation on paper vs on-the-ground: implementation in RSPO system will need to address current weaknesses in assurance systems
- RSPO cannot claim no deforestation or to be a no deforestation standard until credible implementation is demonstrated on-the-ground
- Including need to require no deforestation in RSPO member supply chains e.g. in 'conventional oil' in mass balance
- Part of No Deforestation is No burning: huge problem of fires connected to RSPO.
 - Greenpeace research found that of the fire hotspots during the first nine months of 2019 in Indonesia, in the 30 groups' concessions with the most hotspots, three quarters (75%) were in operations controlled by producer groups that are RSPO members. And these are also in the supply chains of RSPO traders and processors.

An aerial photograph of a river meandering through a vast, dense tropical forest. The river is dark and reflects the surrounding greenery and a bright sky. The forest is a mix of deep green and lighter, sunlit green, showing a thick canopy. A white circular graphic with a thin black border is positioned in the upper left corner, containing the text "Thank you".

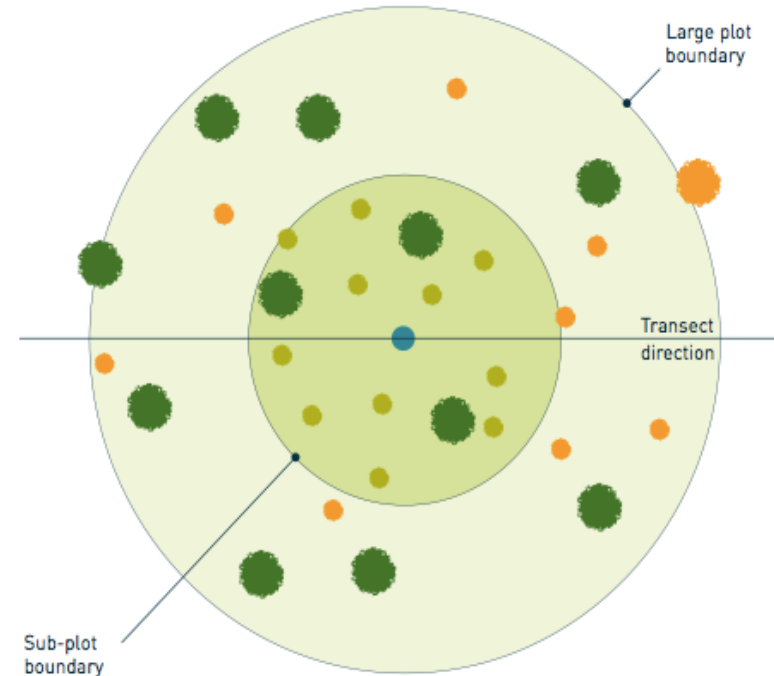
Thank you





Supplementary Slides

Phase 1: Vegetation and Landcover Classification



A combined analysis of remote sensing and field plot data to stratify vegetation into 6 classes



Plot	Plot radius (m)	Plot sample area (m ²)	Tree DBH measured (cm)
Sub-plot	5.64	100	5–14.9
Large Plot	12.61	500	15 up
Trees DBH 5–14.9 cm	Trees DBH 15 cm up	Plot centre	
Measured 	Measured 		
Not measured 	Not measured 		

Phase 2: Decision Tree to analyse HCS forest patches and propose an Integrated Conservation and Land Use Plan

